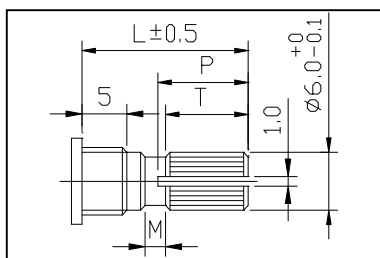


Note 1: 軸型與軸長

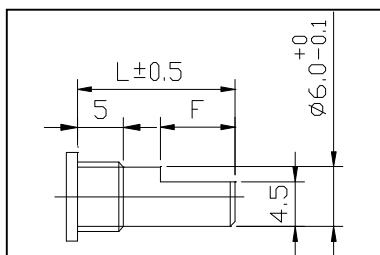
車制軸心：

Q-Type



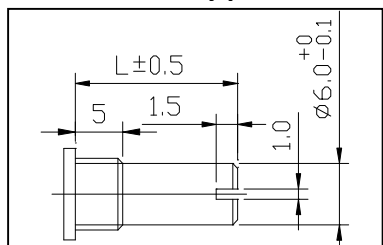
Code	1	2	3	4	5
L	15	20	25	30	35
P	6.5	11.5	14	14	14
T	5.5	10	12	12	12
M	1	1.5	2.5	4	4

F-Type



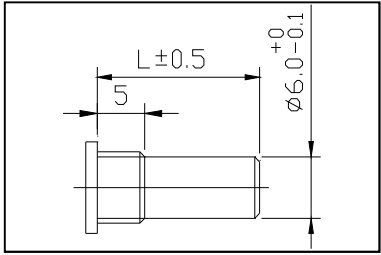
Code	1	2	3	4	5
L	15	20	25	30	35
F	7	12	12	12	12

S-Type



Code	1	2	3	4	5
L	15	20	25	30	35

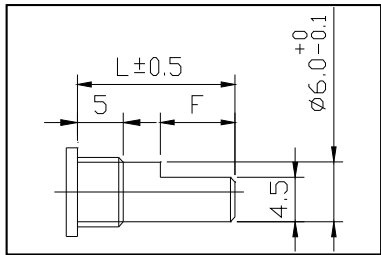
R-Type



Code	1	2	3	4	5
L	15	20	25	30	35

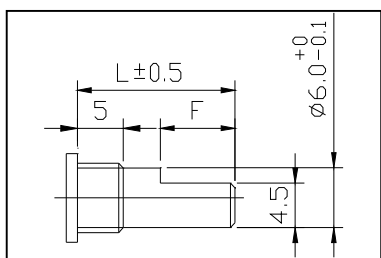
壓鑄軸心：

A-Type(不帶開關機種)



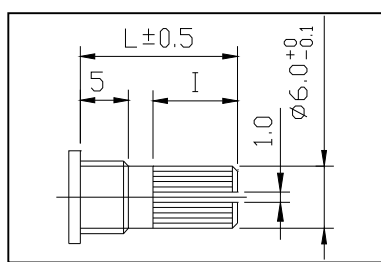
Code	1	2	3	
L	15	20	25	
F	7	12	12	

A-Type(帶開關機種)



Code	1	2	3	4	5
L	13	15	20	25	30
F	7	7	12	12	12

B-Type(帶開關機種)



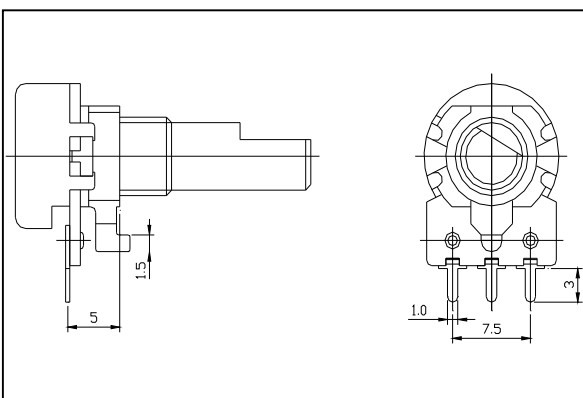
Code	1	2		
L	15	20		
I	6	11		

Note 2: 標準全阻值

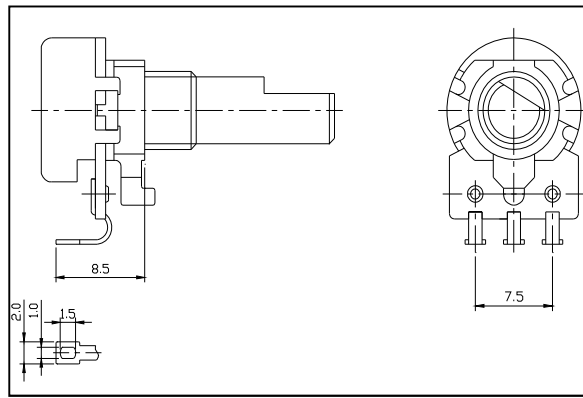
1K	2K	5K	10K	20K	50K	100K	200K	500K	1MEG
----	----	----	-----	-----	-----	------	------	------	------

Note 3: 端子結構

V-TYPE

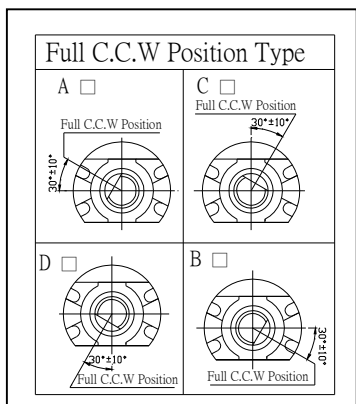


P-TYPE

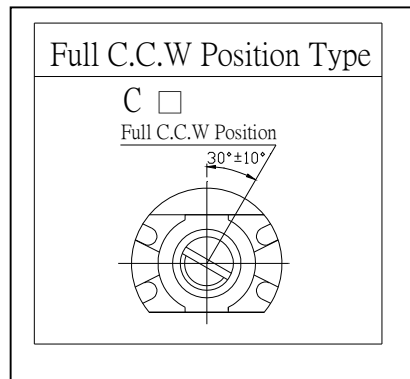


Note 4: 逆時針全旋轉位置

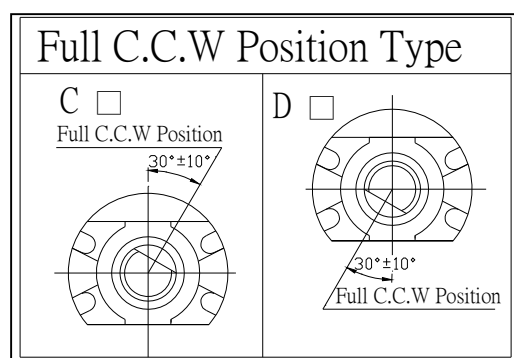
F型軸心



Q/S/B型軸心



A型軸心



R型軸心

