

F12 Series Rotary Potentiometer



Rotary Potentiometer

Joystick

Slide Potentiometer

Trimmer Potentiometer

Encoder

Switch

Sensor



Feature

1. Carbon element
2. Switch option Molded case
3. Wide assortment of resistance tapers

Application:

- Radio Volume Control
- Medical Equipment
- Electronic Toys

Recommended model:

- ◆ F12-NN1B10K F12-NP1B10K F12-SN1B10K
F12-SP1B10K F12-SD1B10K F12-ST1B10K

Electrical Characteristics

Total Resistance	1KΩ-1MΩ
Total Resistance Tolerance	±20%
Resistance Taper	A,B,C,D
Sliding Noise	Less than 100mV
Residual Resistance	Term.1~2: Less than 20Ω Term.2~3: Less than 20Ω
Max. Operating Power	Linear Taper B: AC 150V Other Tapers: AC 100V
Rated Power	Linear Taper B: 0.01W Other Tapers: 0.05W

Durability

Rotational Life	10,000 Cycles
-----------------	---------------

Mechanical Characteristics

Total Rotational Angle	230° ± 10°
Rotational Torque	10gf.cm~100gf.cm
Rotational Stopper Strength	2.0kgf.cm min.
Push-Pull Strength	Push: 1.0Kgf min.

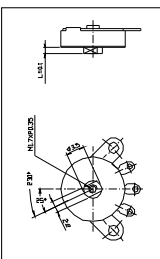
Switch Characteristics

Circuit	S.P.S.T
Contact Resistance	Less than 50Ω
Withstand Voltage	1 Minute at AC 500V
Rated Power	1.0A at AC/DC 12V
Torque	100gf.cm ~ 350gf.cm
Strength	35° ± 10°

HOW TO ORDER

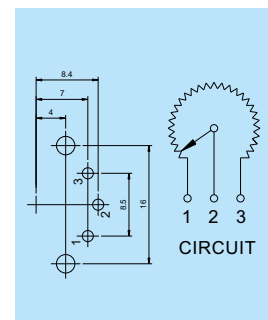
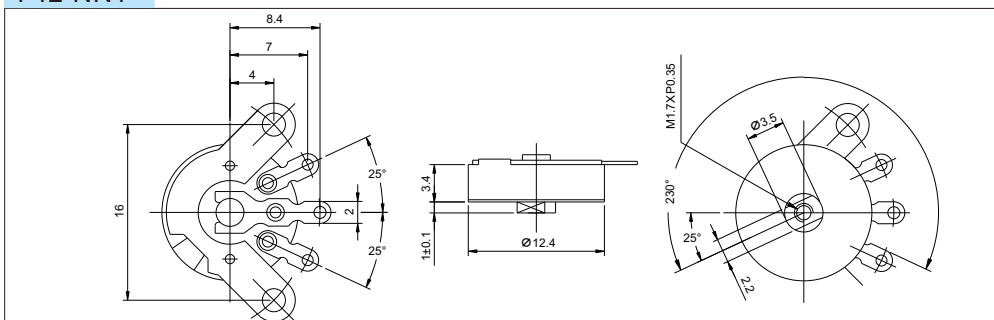
F12-	N	N	1	B	10K
Model Series	Terminal Length	Terminal Configuration	Resistance Taper	Total Resistance	
	N: No Switch S: With Rotary Switch	N: Side Adjust, Solder Lugs P: Top Adjust, PC Pins D: Rear Adjust, PC Pins T: Top Adjust, Special PC Pins H: Side Adjust, PC Pins with Frame	A: Audio (15A) B: Linear (1B) C: Reverse Audio(15C) D: Audio(10A)	1K	2K
				5K	10K
				20K	50K
				100K	200K
				500K	1MEG
			Shaft Length		
			See Note1		

Note1: Shaft Length



Code	1	2	3	4	5	6	7	8	9	0
L	1	1.2	2	2.2	2.5	3	4	5	6	7

F12-NN1

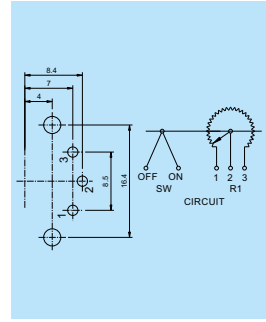
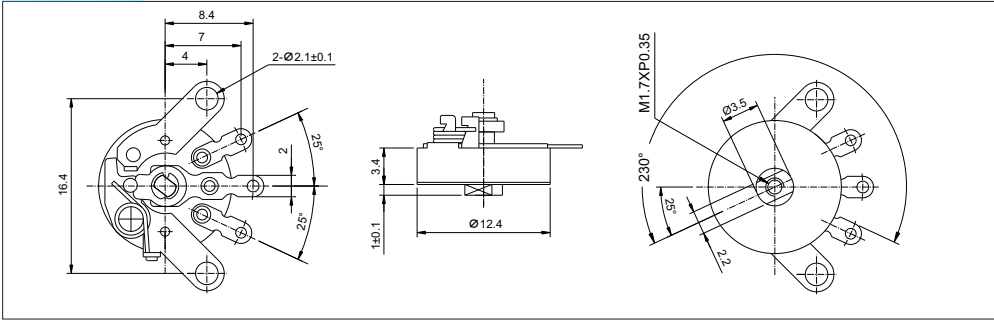


F12 Series Rotary Potentiometer



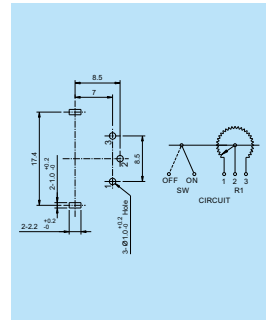
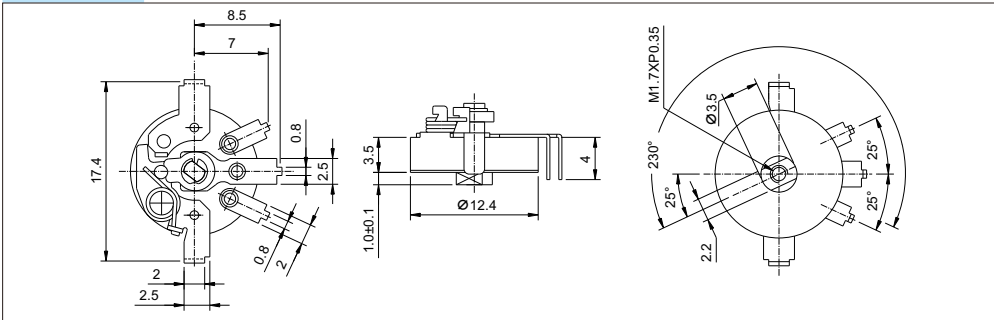
Rotary Potentiometer

F12-SN1



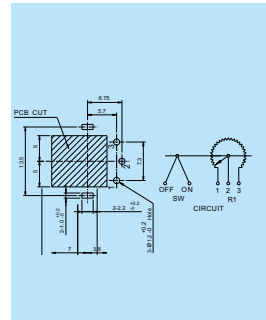
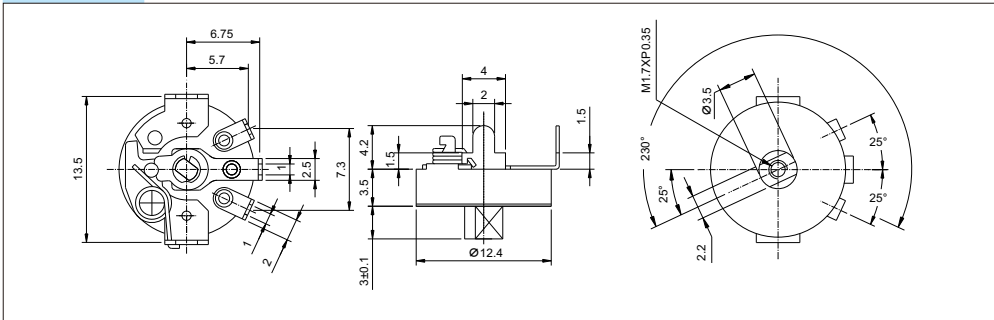
Joystick

F12-SD1



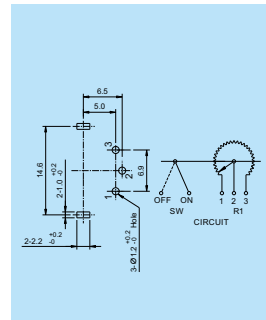
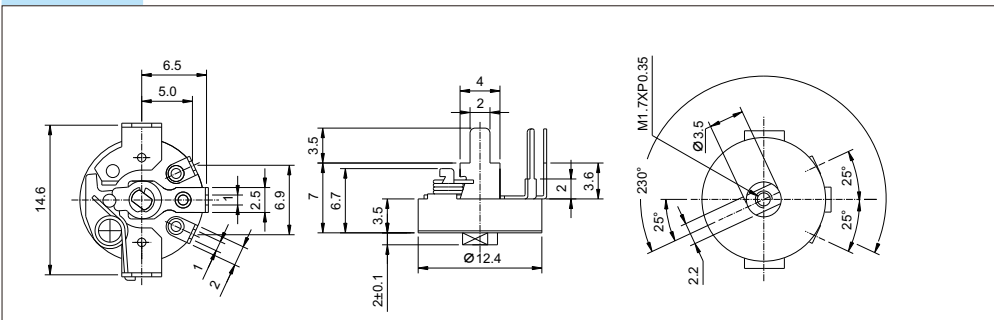
Slide Potentiometer

F12-ST6



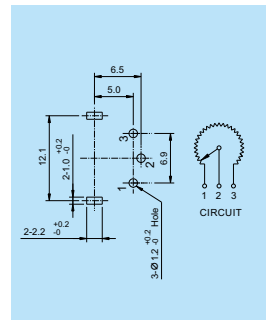
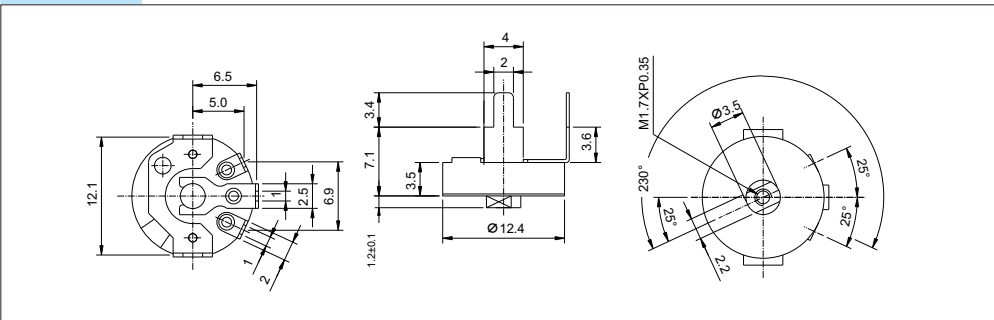
Trimmer Potentiometer

F12-SP3



Encoder

F12-NP2



Switch

Sensor

